



**HUNTERS**<sup>®</sup>  
HERE TO GET *you* THERE

2  2  |  |  E

HUNTERS



# Stepney Avenue, Scarborough

## Offers Over £180,000



Welcome to this beautifully presented detached property, tucked away in a secluded cul-de-sac in the ever-popular Stepney area of Scarborough. Perfect for first-time buyers, couples, or small families, this home offers a stylish and comfortable living space that has been finished to a high standard throughout.

Step inside to a bright and inviting open-plan living and dining area, complete with a charming bay window that fills the space with natural light—ideal for both relaxing and entertaining. The modern kitchen features a walk-in pantry for added convenience, while two generous double bedrooms provide restful retreats. A newly fitted, contemporary bathroom adds a touch of luxury.

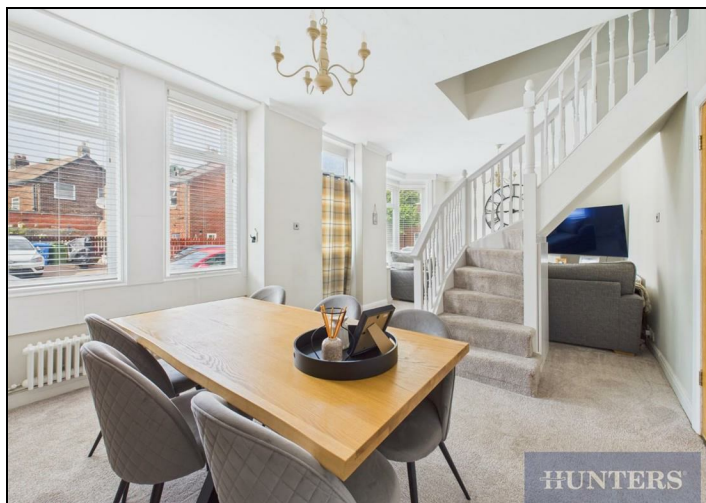
To the rear, a private courtyard garden offers low-maintenance outdoor space—perfect for relaxing or hosting guests.

Well located, the property affords easy access to a wealth of local amenities and attractions, including Falsgrave Park, a popular junior school, local shops along Falsgrave shopping parade, and a variety of well-loved pubs, cafés, and restaurants. Scarborough Town Centre and the Train Station are also within close reach, making this a truly convenient and desirable place to call home.

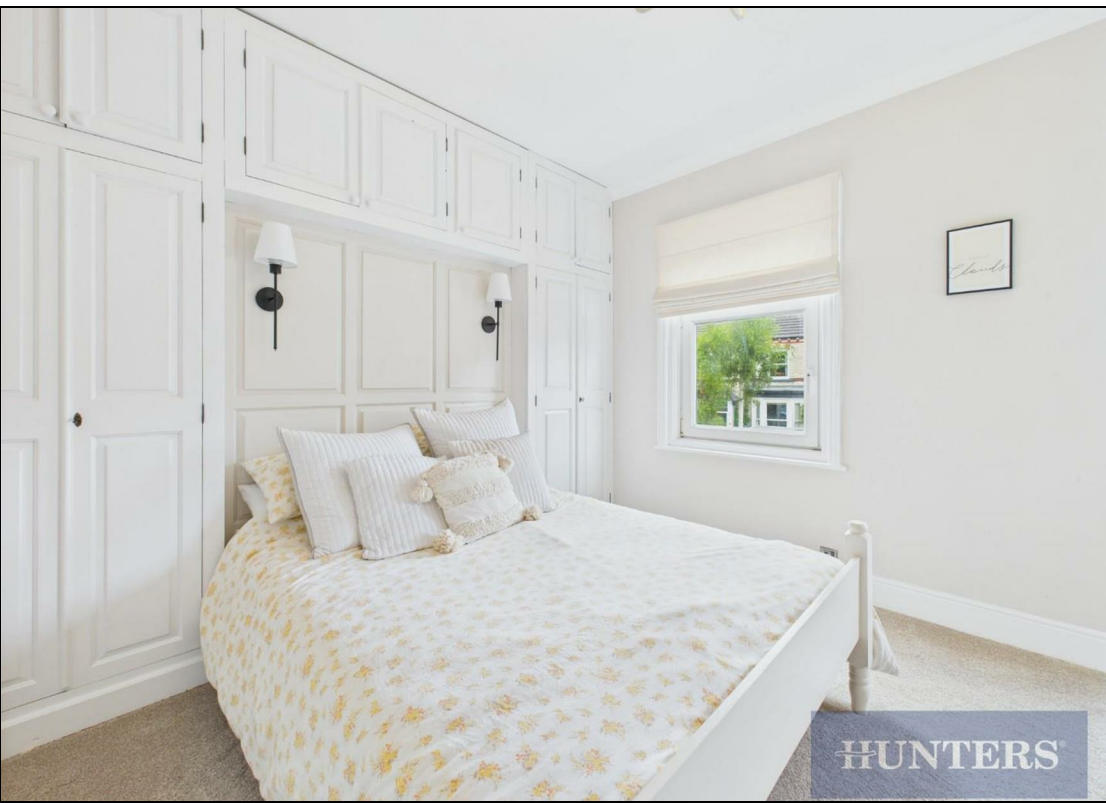
This property is not one to miss, call the office to arrange a viewing!

## KEY FEATURES

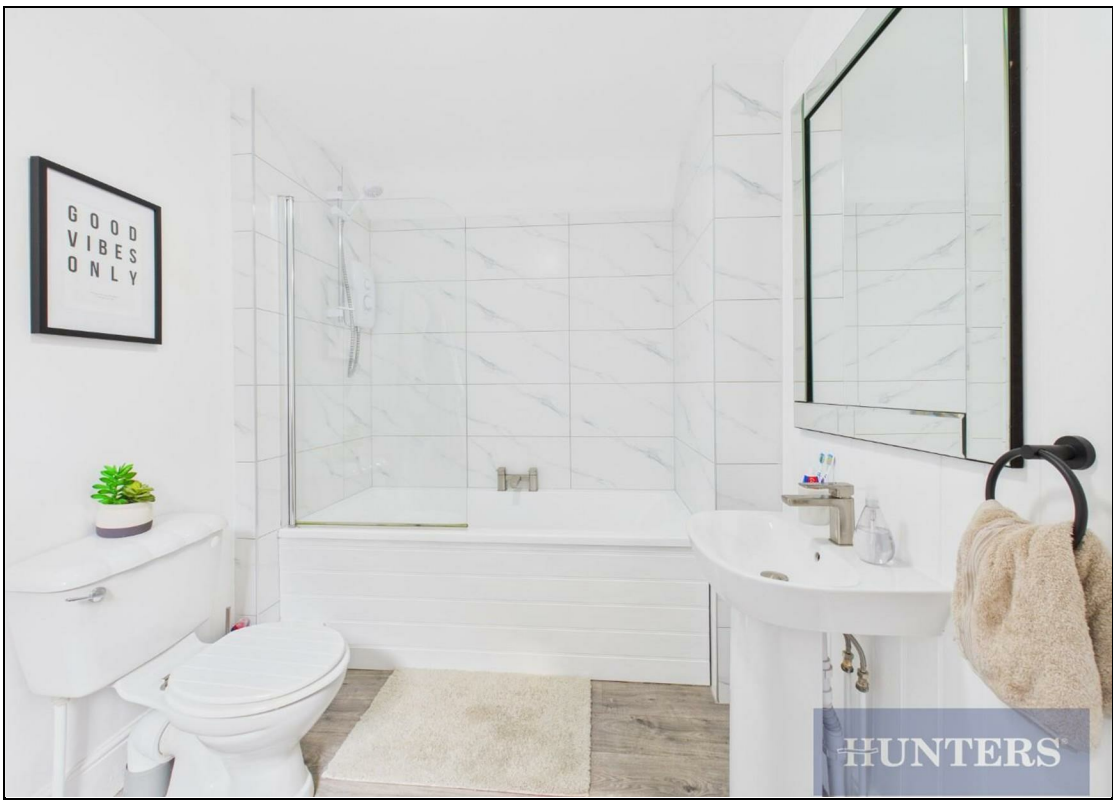
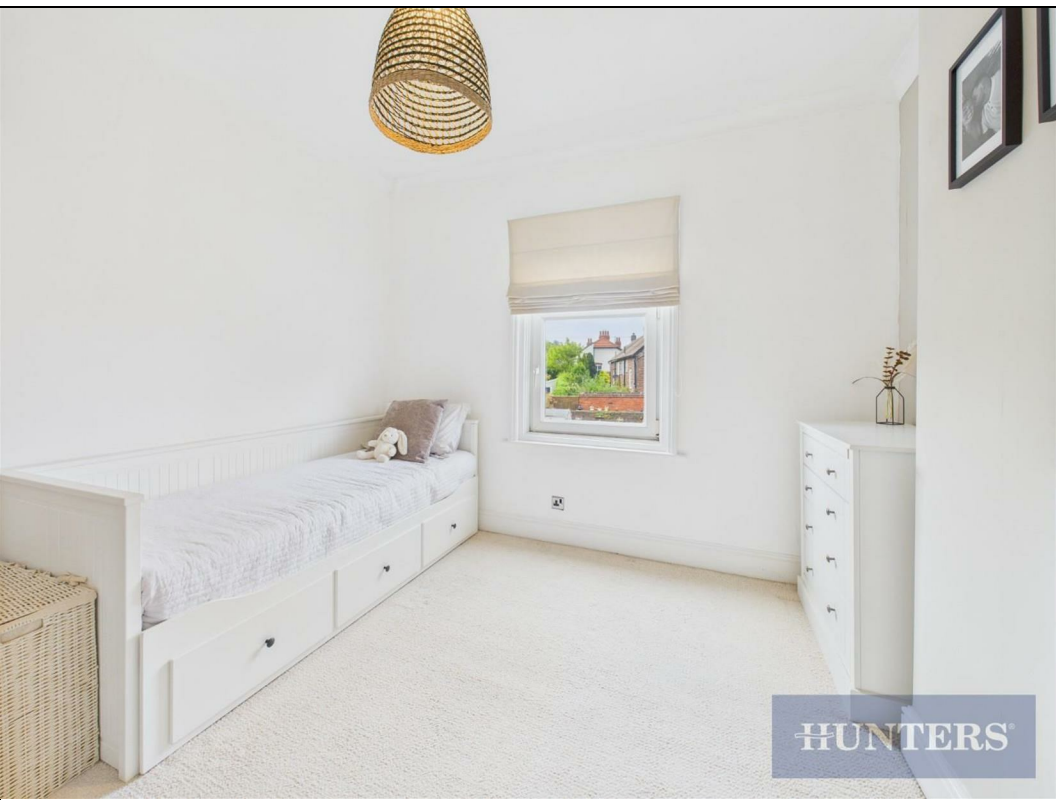
- Detached Home
- Open Plan Living/Dining Room
  - Two Double Bedrooms
  - Newly Fitted Bathroom
- Low Maintenance Courtyard
- Sought After Location



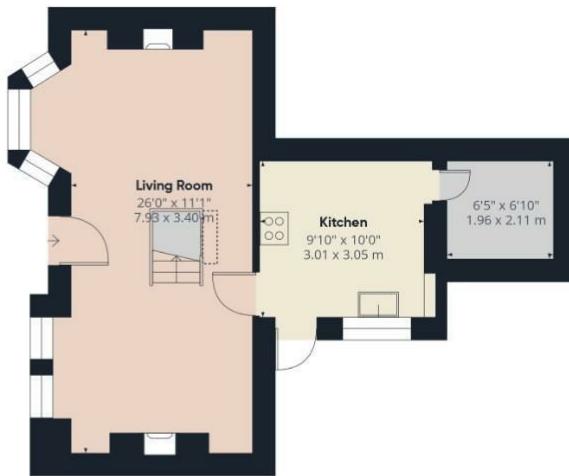




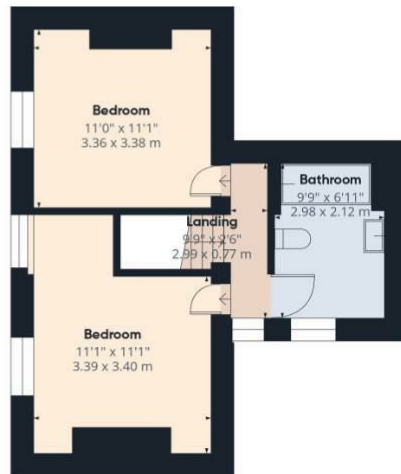








Ground Floor



Floor 1

**HUNTERS**  
HERE TO GET YOU THERE

Approximate total area<sup>(1)</sup>

800 ft<sup>2</sup>  
74.3 m<sup>2</sup>

Reduced headroom

2 ft<sup>2</sup>  
0.2 m<sup>2</sup>

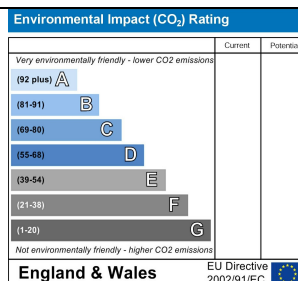
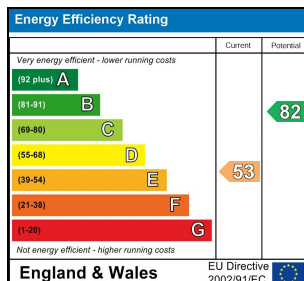
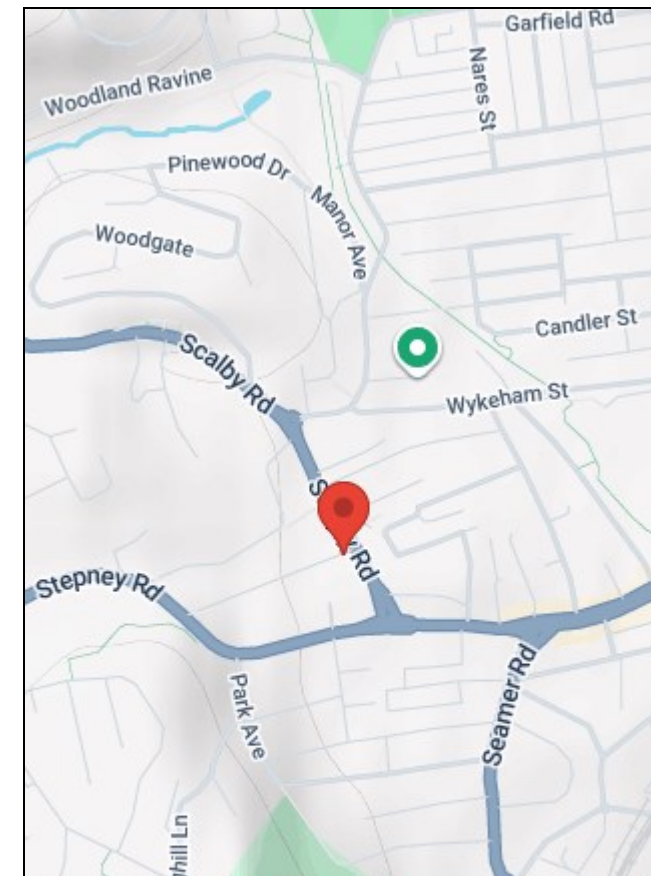
(1) Excluding balconies and terraces

Reduced headroom

Below 5 ft/1.5 m

Calculations reference the RICS IPMS 3C standard. Measurements are approximate and not to scale. This floor plan is intended for illustration only.

GIRAFFE 360



33 Huntriss Row, Scarborough, YO11 2ED | [01723 336760](tel:01723336760)  
[scarborough@hunters.com](mailto:scarborough@hunters.com) | [www.hunters.com](http://www.hunters.com)



This Hunters business is independently owned and operated by Coast and Country Scarborough Ltd | Registered Address: C/O Dutton Moore Aldgate House 1-4 Market Place Hull HU1 1RS | Registered Number: 5974243 England and Wales | VAT No: 212 2999 13 with the written consent of Hunters Franchising Limited